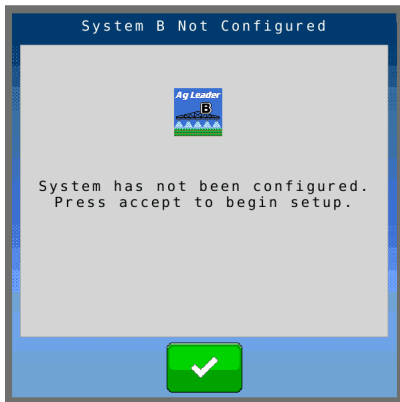


Press: VT button



Set Up the Module Configuration (If Necessary)

If the active system has not been configured, this message will appear.

Acknowledge the message and step through the System Configuration and Profile wizard.

Module Runscreen

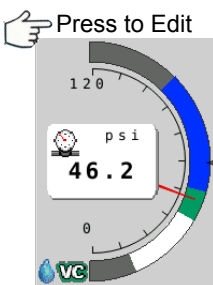
Product Density Adjustment



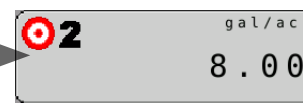
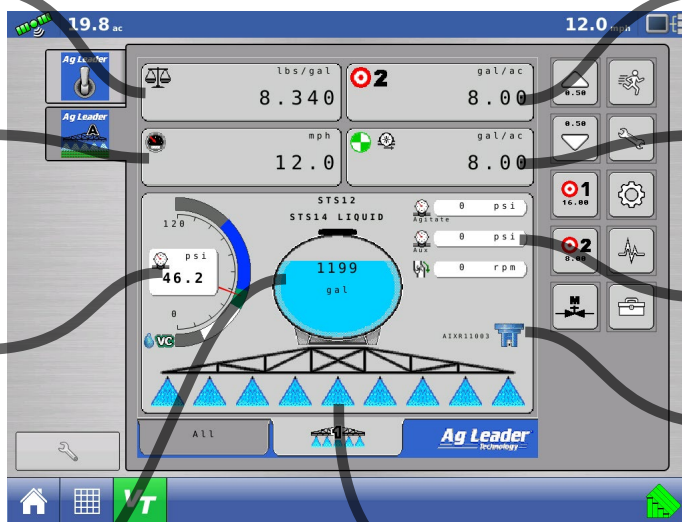
Speed Source Selection



Main Pressure and Droplet Size Indicator



Tank Volume Countdown



Target Rate Adjustment



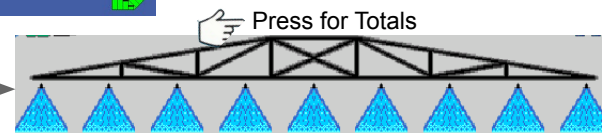
Actual Rate



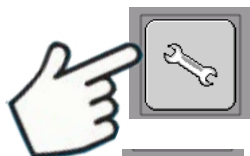
Pressure and Pump Speed Readout



Nozzle Selection

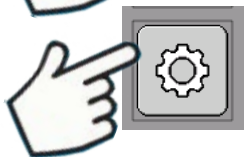


Section Indicator



Press the Settings (wrench) button then Control Valve Settings to enter control valve settings.

Note: See operator's manual for setting descriptions.



Press the Gear button to calibrate sensors.



= Calibrated



= Not Calibrated



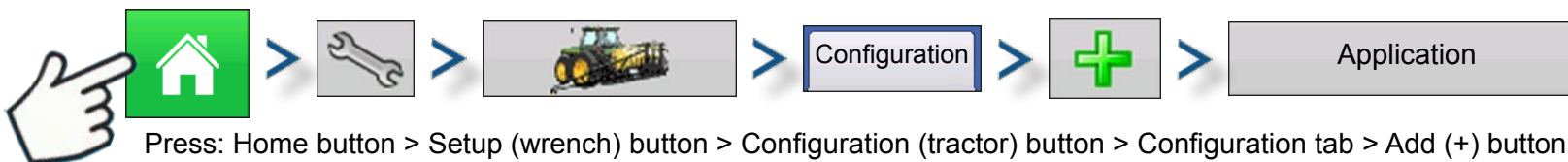
= Not Present

Step through the wizard for each sensor that needs calibrated.

Note: Sensors need to be calibrated before the system can be operated.

Assign auxiliary switches. For more information, see QRG 2006012-ENG_A_INST_AgLeader Aux Input Setup.

Setting up the Display Configuration




Complete the Operating Configuration Wizard. See Integra Operator's Manual (P/N 4002083) for assistance.

Note: The Make and Model of the liquid channel controller need to be Ag Leader and ISO Liquid Control.




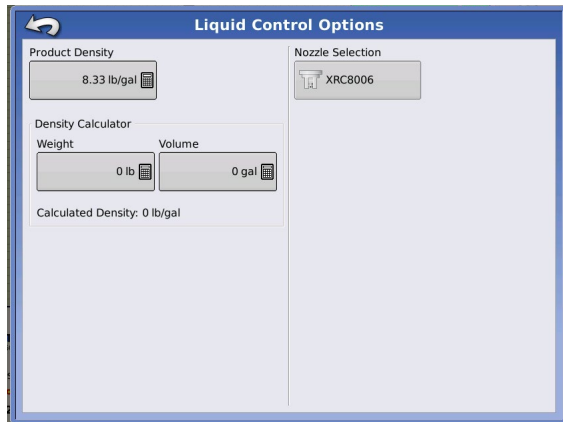
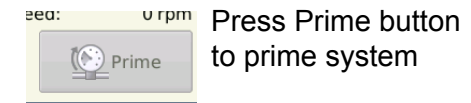
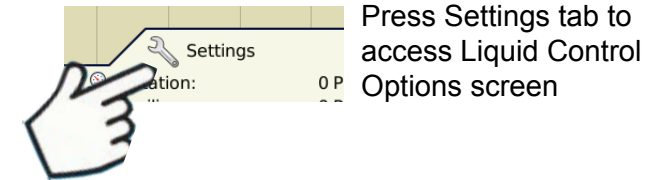
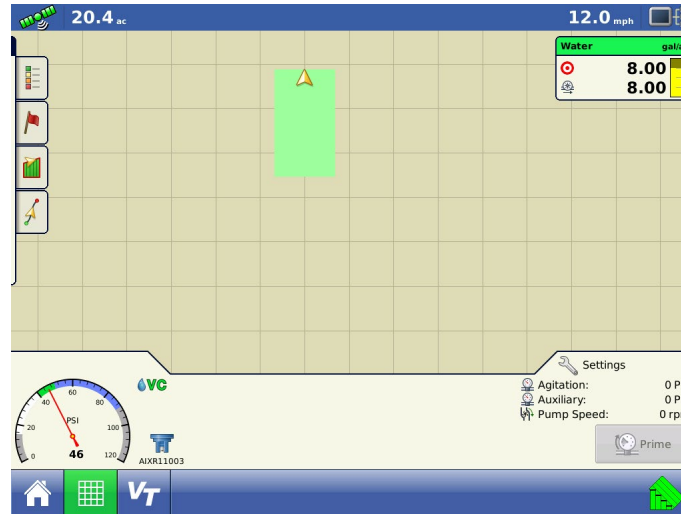
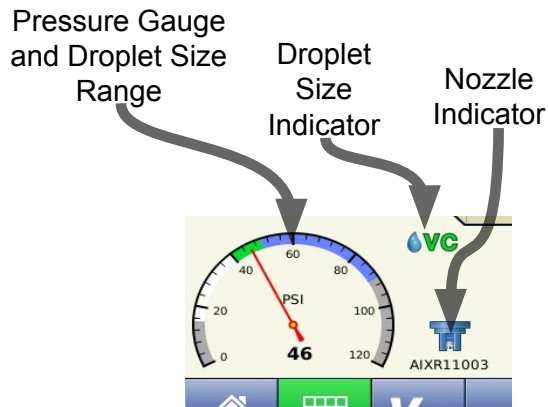
Press Home button to return to home screen.

Select the configuration. If  is shown, check that display configuration setup matches module configuration setup

Start a new event.

Note: The user may need to create a new Season, Grower, Farm, Field, or Product.

Press  next to each item and complete each wizard.

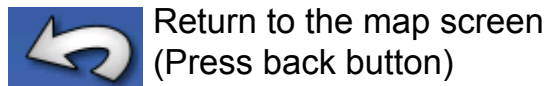


Go to Liquid Control Options screen
Enter the product density.

Note: The user can calculate the density by entering the known weight and volume.

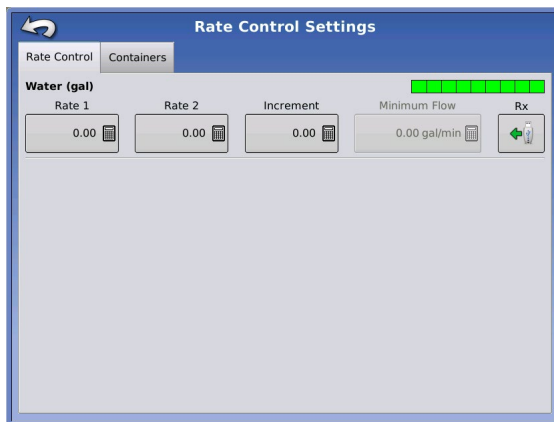
Select the nozzle that will be used on the machine.

Note: Product Density and Nozzle Selection are required for pressure based control. If there is not a nozzle present to select, the user must add one in the module.





Press Rate tab > Settings (wrench) button



Enter a target rate for rate 1 and 2.
Enter increment value.



Return to the map screen
(Press back button)

The system should be setup to apply now.

For more information, see the Integra Operator's manual (P/N 4002083) or contact Technical Support.