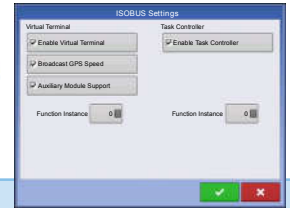


Virtual Terminal Quick Reference Guide (PN 2006300) may also be referenced when trouble shooting problems.

Enable Virtual Terminal and Task Controller



Virtual Terminal

Enable Virtual Terminal

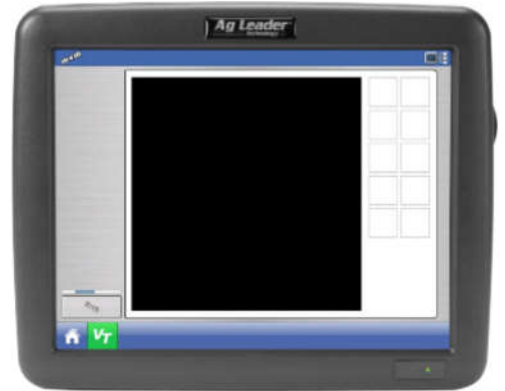
VT button appears in task bar once button is checked.

Task Controller

Enable Task Controller

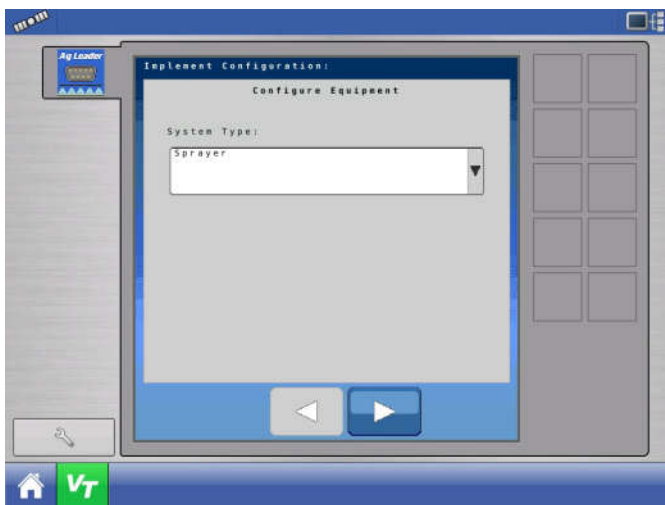
Supported on compatible equipment ECU's.

Status Bar Appears while Object Pool is in the process of loading.



Setup a Configuration within the Virtual Terminal

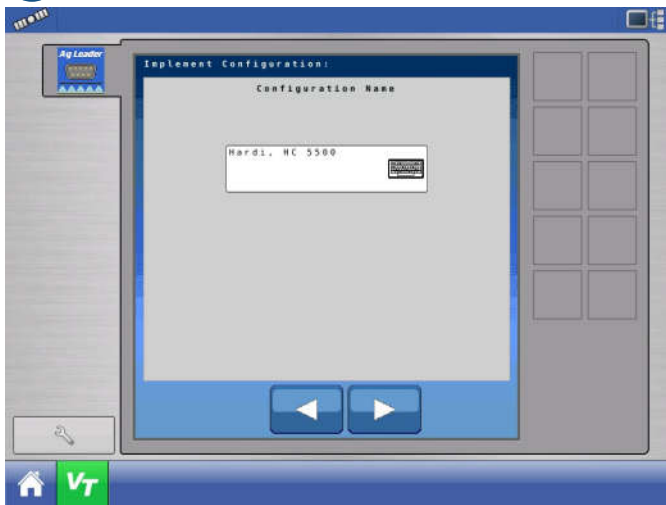
A Select System Type



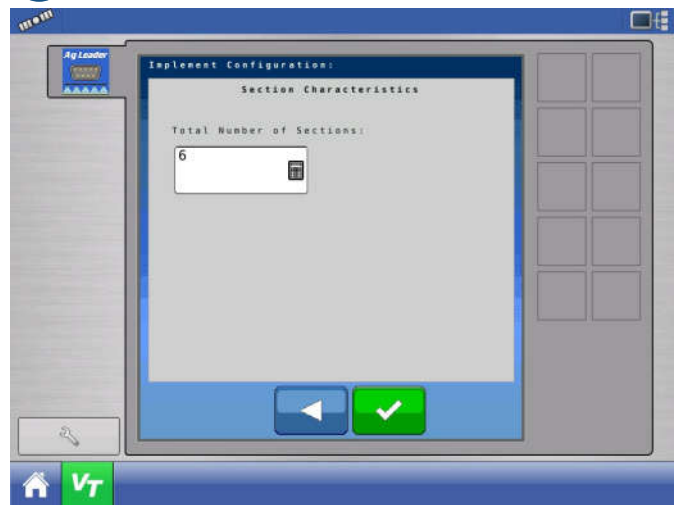
B Select Controller Make and Model



C Enter Configuration Name

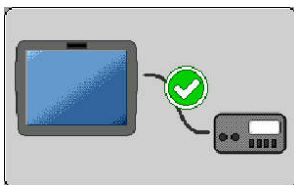


D Input number of Sections



The status screen provides the user with readout of the connected controller's target rate, actual rate, section status, and connection status.

NOTE: The target rate is not editable from the VT screen. This can only be done from the Run Screen



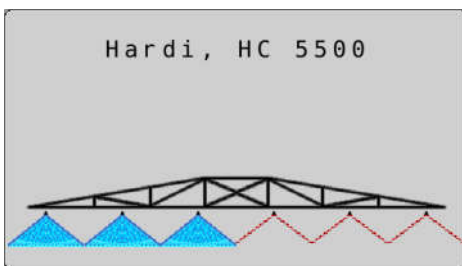
Serial Connection Status – Indicates if the ISOBUS Serial Application Rate module is communicating with the connected controller.



Target Rate Status – Indicates the target rate sent to the connected controller.

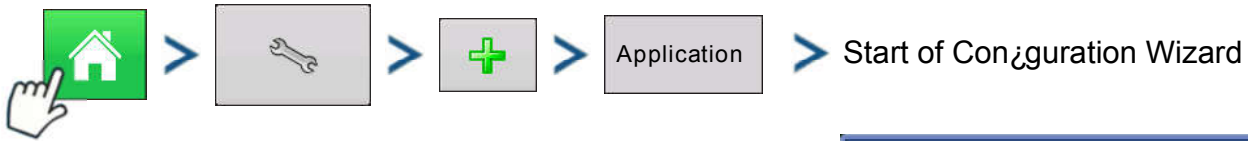


Actual Rate Status – Indicates the actual rate received from the connected controller.



Boom Section Status – Indicates the on/off status of the boom sections sent to the connected controller.

Create Configuration

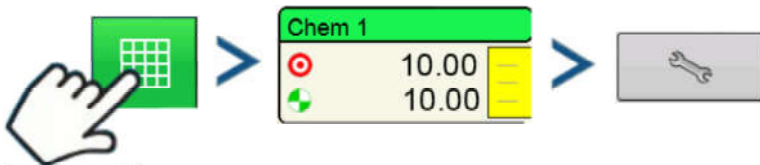


Note: Controller Make and Model need to be selected as Ag Leader and ISO Serial Bridge.
Select Operating Configuration
Create Event



Enter Target Rate and Increment

Runscreen>Product Tab>Wrench>Input Target Rate 1>Input Increment



Rate 1 and Rate 2

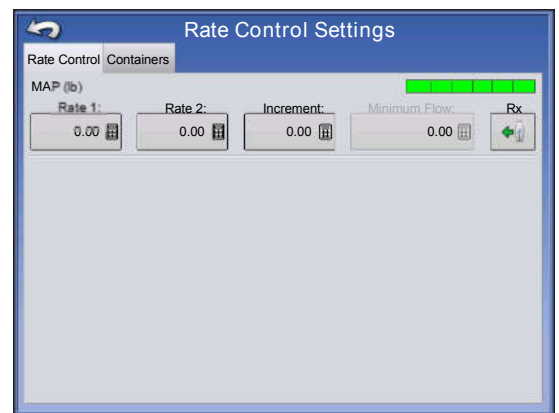
allows operator to set desired target rates

Increment

values when using up and down arrows in the Product Control Toolbox

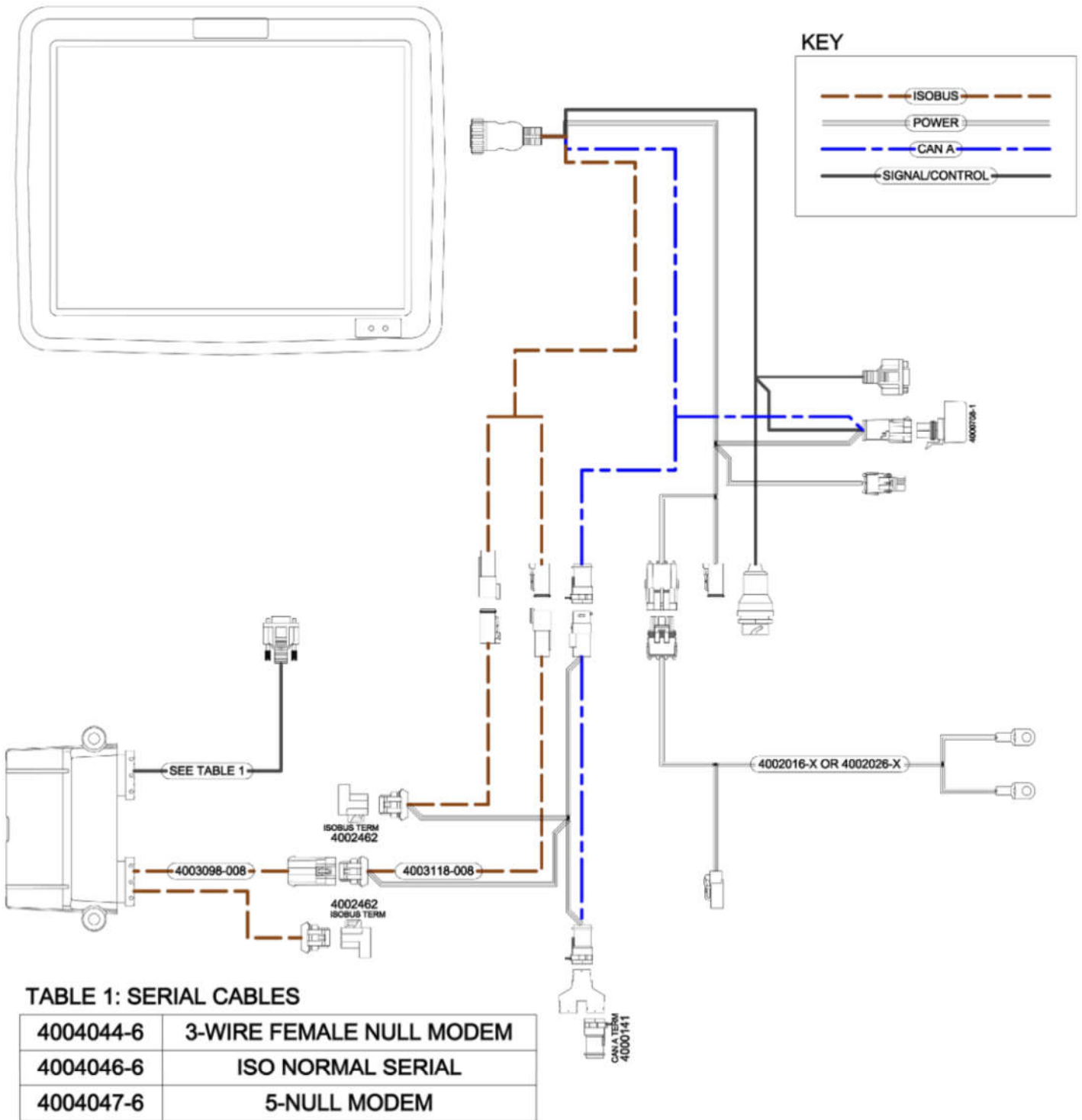
Prescription

press to load a map-based prescription file



Note: Some Controllers allow users to increase the target rate by an increment amount of their own. The ISO Serial Bridge module will not know that the Target Rate has changed and may trigger a Rate Not Responding Alarm. To avoid this, use the increment increase/decrease function within the Ag Leader Display.

ISO Serial Bridge - Serial Module Only



Controller	Row Crop Planter	Seeders and Drills	Spreaders	Sprayer	Required Harness	Other Information
Rawson						Harness connects directly to Rawson controller Requires setting the Rawson controller to GPS mode to enable serial communication
Accu-Plant	X		X		4004046-x	
Accu-Rate	X		X		4004046-x	
Bogballe						Harness connects directly to Bogballe controller
Calibrator Uniq			X		4004044-6	
Calibrator 2003			X		4004044-6	
Calibrator Zurf			X		4004044-6	
Calibrator ICON			X		4004044-6	
UNIA Group						Harness connects directly to BRZEG controller
BRZEG			X		4004044-6	
Amazone						Harness connects directly to Amazone controller Requires baud rate set to 19200 in the controller
Amatron+			X		4004044-6	
LH AGRO						Harness connects directly to LH controller
LH5000			X	X	4004044-6	
Kuhn						Requires Kuhn cable PN:1409955
Quantron			X	X	4004044-6	
RDS						Requires RDS cable PN:CB268-1-032
Pro			X	X	4004044-6	
Reco/Sulky						Requires Reco/Sulky cable PN:CB268-1-032
Vision-X			X	X	4004044-6	
Hardi						Harness connects directly to 5500
5500				X	4004044-6	