



Follow the USB Wi-Fi Adapter instructions (p/n 2006356) that came with the Ag Leader USB Wi-Fi adapter to ensure connection to a Wi-Fi network and logging into AgFiniti from the display using AgFiniti login credentials.

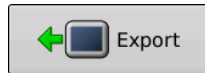
If you do not have an AgFiniti account, go to www.agfiniti.com to create one.

File Transfer requires a File Transfer license (one per display). AgFiniti is compatible with Ag Leader Integra and Versa displays.

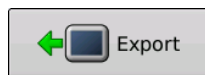
Importing and Exporting Files



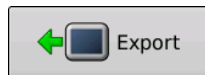
Import an AgSetup file with setup data from AgFiniti



Export an AgSetup file with setup data to AgFiniti



Exports logged data in the display since the last time log files were exported to AgFiniti via a AgData file



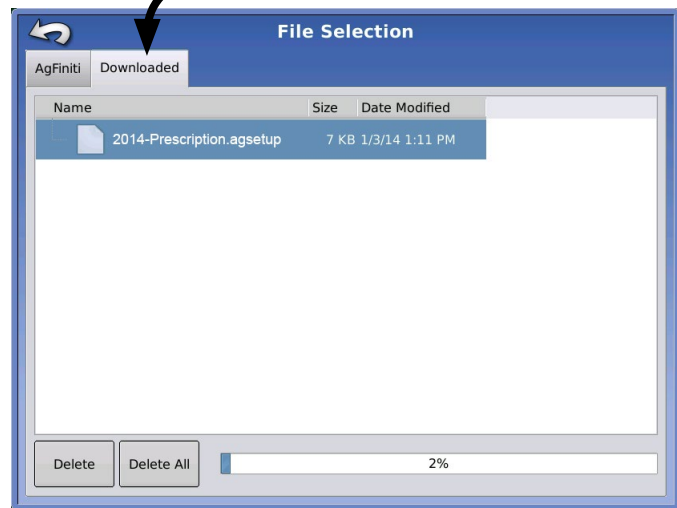
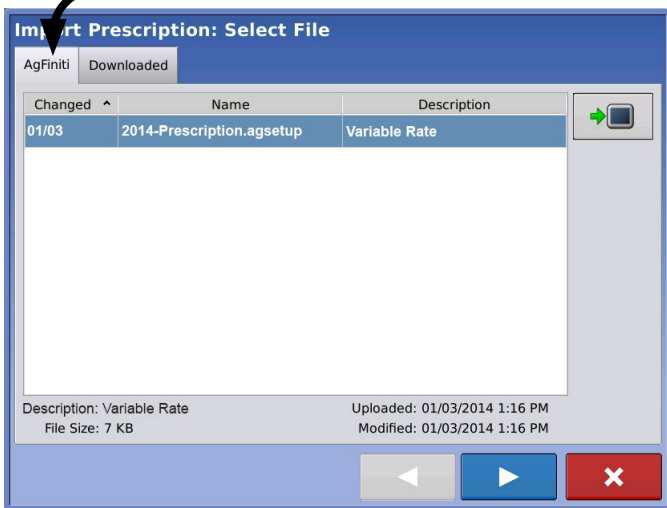
Exports internally stored Smart Reports™ to AgFiniti

Viewing Files



AgFiniti tab shows AgSetup and AgData files that are present in your AgFiniti account.

The Downloaded tab shows files that are stored on the internal memory of the display. These files can be accessed when there isn't an internet connection, but Wi-Fi adapter must be inserted.



From the AgFiniti tab, select file and press Download button to download file.

Note: These buttons delete files from internal memory NOT from AgFiniti.

From Downloaded tab, select file and press Delete button to delete file from internal memory.

From Downloaded tab, press Delete All button to delete all files from internal memory.

Export Settings



Log Files

Export by Grower

Export by Event

Export data files on shutdown

Export All Log Files

Exports AgData files by grower

Exports AgData files by event

Exports AgData files each time display is shut down if logged into AgFiniti account.

Exports all logged data in display to AgFiniti via an AgData file

Importing a Prescription

Importing a Variety Reference Map (Harvest Only) from Options screen in the Event Wizard

Select Event >>>

Display user is responsible for providing an internet data plan and for overage charges.