

ParaDyme Steering Controller Firmware Upgrade Instructions

Subject

This document outlines the procedures required to upgrade the ParaDyme roof module to the latest firmware version. Refer to the firmware release notes for information on the features and enhancements that have been added with the newest release of firmware.

Process Overview

Procedure 1 – Download the ParaDyme Upgrade File.....	2
Procedure 2 – Determine Roof Module Upgrade Method.....	4
Procedure 3 – Navigate to the ParaDyme AutoSteer screen.....	5
Procedure 4 – Upgrade from ParaDyme Roof Module.....	7
Procedure 5 – Upgrade from Display USB Port	9

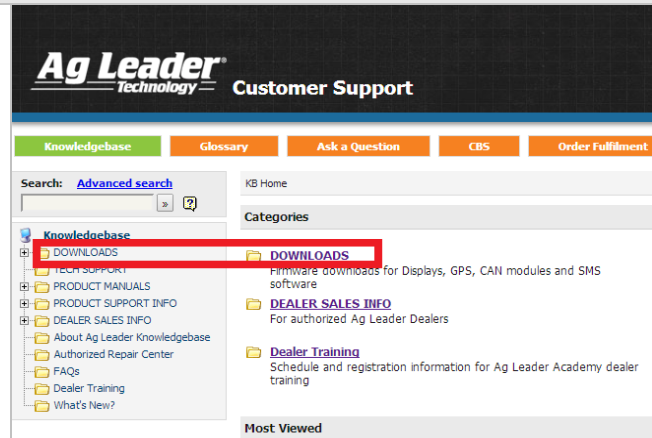
Note: The screen shots and steps shown in this document are provided as a general guide only. Variations from the screens shown in this document may appear, depending on your Windows version and configuration. This document assumes the user has a basic understanding of the Windows operating system.

Procedure 1 – Download the ParaDyme Upgrade File

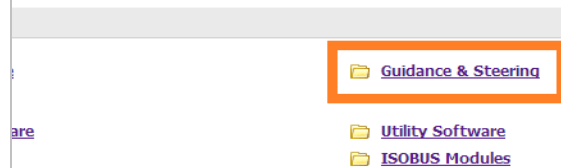
1. Navigate to the Ag Leader dealer site: <https://dealer.agleader.com/kbp/>

Procedure 1 – Download the ParaDyme Upgrade File

2. Click on “Downloads” after logging in to the dealer site.



3. Click on “Guidance and Steering”



4. Select the latest ParaDyme firmware (.tgz) file to download. If you are using Google Chrome, the file may go to a default downloads location.

ParaDyme Firmware v3.4.28529

[ParaDyme Firmware v3.4.28529](#)

Ag Leader has released version 3.4.28529 for the ParaDyme Roof Module. This article outlines th

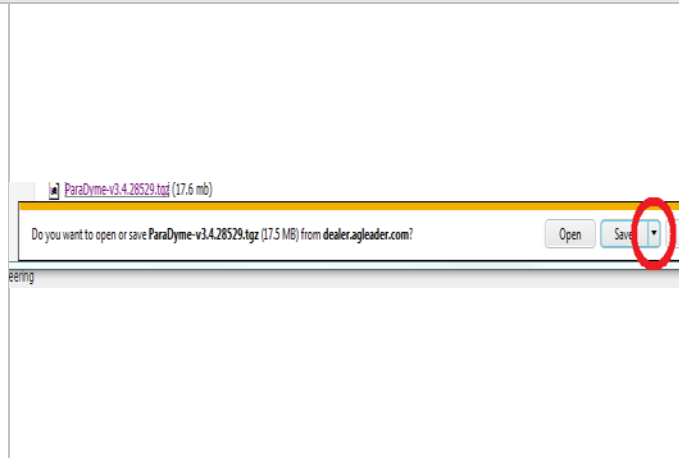
Process Overview:

1. Download the upgrade file and separate companion instructions attached to this article (you will not be able to open a .tgz file, choose SAVE from the download dialog box)
2. Copy the upgrade file to the USB drive
3. Follow the downloaded instructions for installing the upgrade file

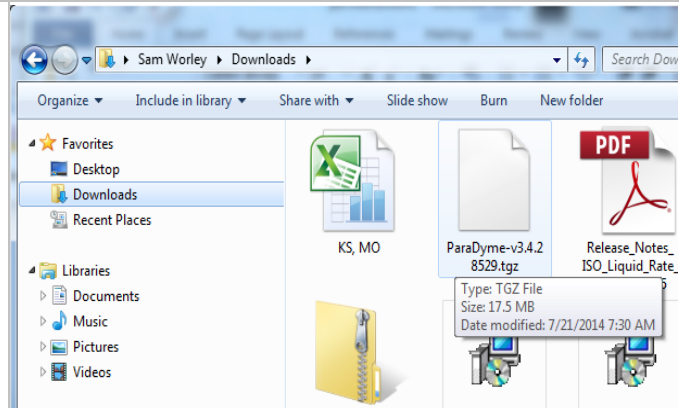
In very rare cases, the system may fail to reboot after the installation of firmware from the User Dis from the Ag Leader Dealer website. After the rescue boot disk has been created, it will need to be

Procedure 1 – Download the ParaDyme Upgrade File continued

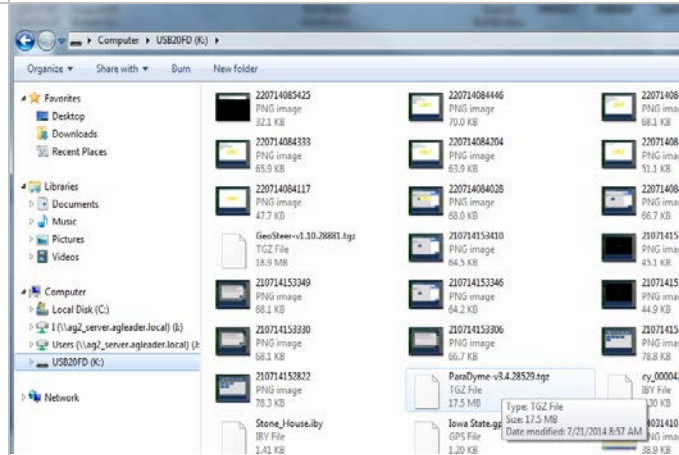
4.5. Using Internet Explorer, after clicking on the file to download there should be an option to open or save the .tgz file. Click the drop down menu by the save option and choose save as. This will allow you to browse the computer and save the file to the external storage device (USB drive.)



5. Find the downloads folder on your computer. Locate the ParaDyme upgrade file and right click on it to send it to the USB drive.



6. Verify that the .tgz upgrade file is on the external storage device



Procedure 2 – Determine Roof Module Upgrade Method

There are two ways to upgrade the ParaDyme roof module:



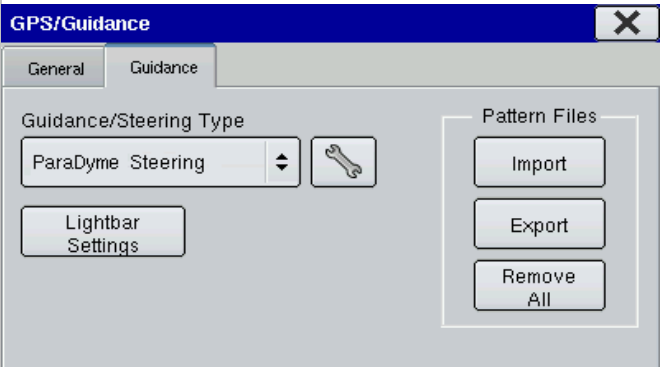
1. ParaDyme Roof Module USB Port – Attach the ParaDyme Auxiliary Harness (201-0433-02) to the auxiliary port on the roof module. Then plug the USB drive with the update file into the USB port on the Auxiliary Harness and then update.
 - Follow Procedure 3 and Procedure 4 below to complete the upgrade.
2. Display USB Port – Plug the USB drive with the update file into the USB port on the Ag Leader® Integra /Versa/Compass and then update.
 - Follow Procedure 3 and Procedure 5 below to complete the upgrade.

Note: This option is not available for EDGE displays.

Procedure 3 – Navigate to the AutoSteer Setup Screen

The following instructions are broken into two sections, one for each of the supported Ag Leader displays. Use the appropriate section to access the ParaDyme AutoSteer screen from the display being used.

Procedure 3a – EDGE display – Navigate to the AutoSteer Setup Screen

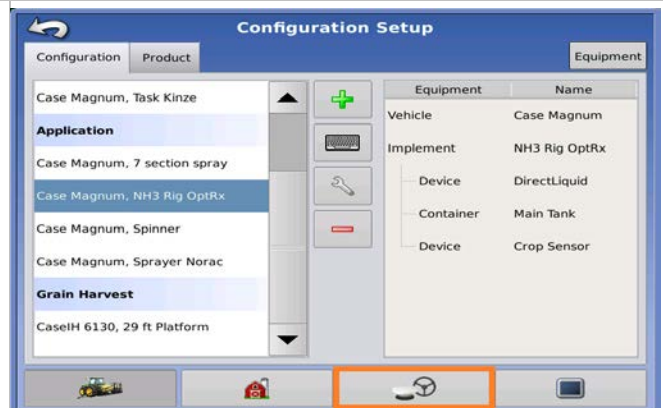
<p>1. Power on the Edge display. At the home screen, press the wrench button.</p>	
<p>2. From the setup screen press the GPS button.</p>	
<p>3. Press the guidance tab. 4. Verify the guidance/steering type selection is set to ParaDyme steering. 5. Press the wrench button next to guidance/steering type to enter the ParaDyme AutoSteer screen.</p> <p>Continue to Procedure 4 – Upgrade from ParaDyme Roof Module.</p>	

Procedure 3b – Ag Leader[®] Integra/Versa/Compass display – Navigate to the AutoSteer Setup Screen

1. Start the Ag Leader[®] Integra/Versa/Compass display.
At the home screen, press the wrench button.



2. From the setup screen press the GPS/guidance button.



3. Verify that the guidance/steering type selection is set to ParaDyme/GeoSteer steering.
4. Press the wrench button next to the guidance/steering selection to enter the ParaDyme AutoSteer screen.

Continue to Procedure 5 – Upgrade from display USB port



Procedure 4 – Upgrade from ParaDyme Roof Module

Procedure 4 – Upgrade from ParaDyme Roof Module

1. Plug the ParaDyme Auxiliary Harness (part number 201-0433-02) into the auxiliary port on the roof module.

Note: Verify the cables are pointed towards the center of the roof module. Attempting to plug it in the other way will cause damage to the roof module.



2. Insert the USB into the USB port of the ParaDyme auxiliary harness.



3. On the display, press the System tab from the ParaDyme Home page.

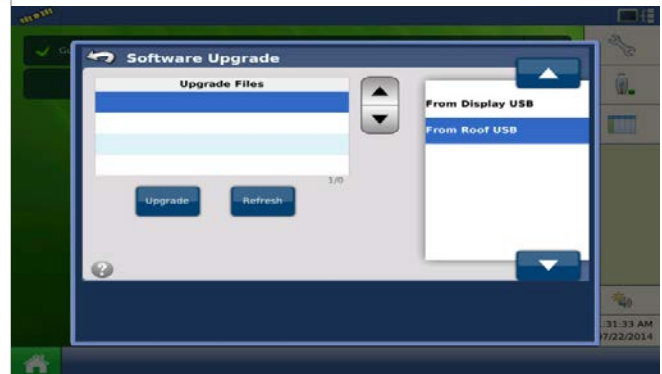


Procedure 4 – Upgrade from ParaDyme Roof Module continued

4. Press the software upgrade button.

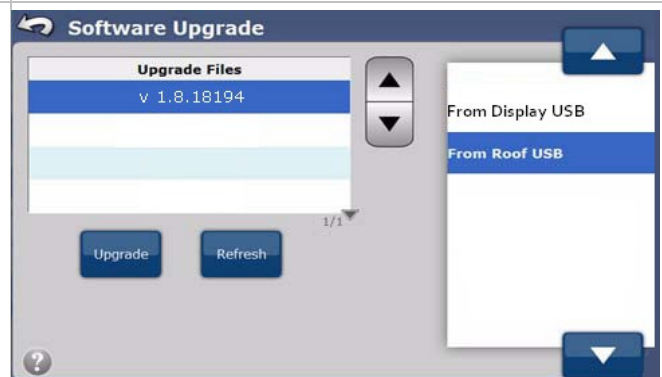


5. Press "from roof USB" from the list on the right.

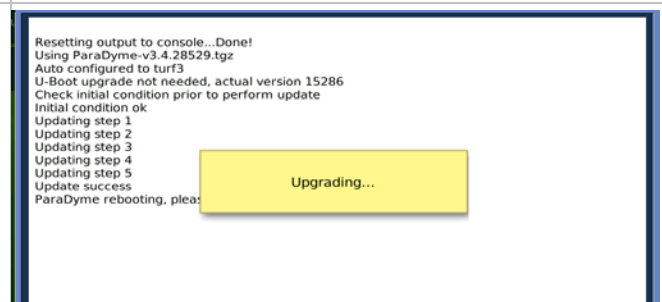


6. Select the upgrade file from the list then press the upgrade button to start the upgrade process.

Note: If there is more than one file on the USB drive, they will be displayed as well.

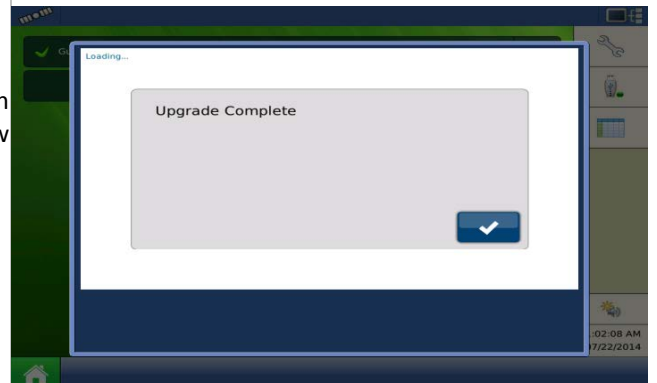


7. Allow the upgrade to proceed automatically.



Procedure 4 – Upgrade from ParaDyme Roof Module continued

8. Once the upgrade has completed, press the Check button to complete the process. The ParaDyme Roof Module is now updated.
9. For best results, power down the system and restart to finalize the installation.



Procedure 5 – Upgrade from Display USB Port

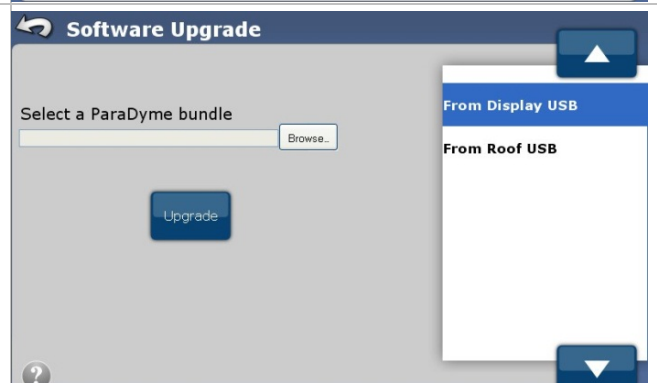
Procedure 5 – Upgrade from Display USB Port

1. Insert the USB drive with the upgrade file into the USB port on the Ag Leader[®]Integra/Versa/Compass display.

2. Press the software upgrade button.



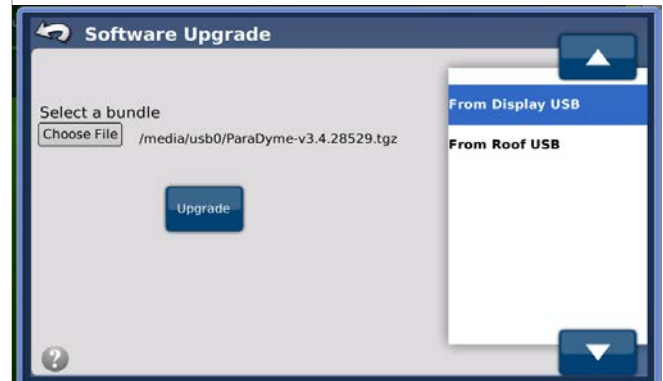
3. Press browse button to select the upgrade bundle.



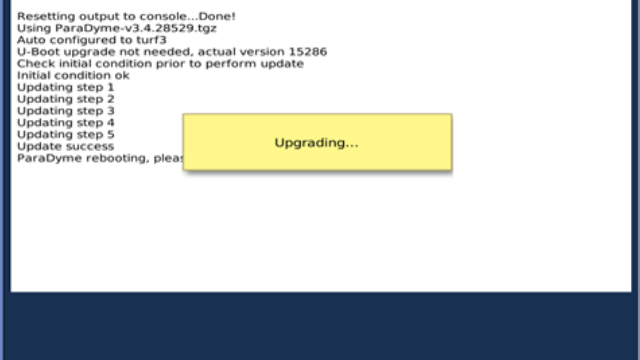
Procedure 5 – Upgrade from USB Port continued Procedure 5 – Upgrade from Display USB Port

4. Select the upgrade file from the list then press the upgrade or check button to start the upgrade process.

Note: If there is more than one upgrade file on the USB drive , they will be displayed as well.



5. Allow the upgrade to proceed automatically.



6. Once the upgrade has completed, press the check button to complete the process. The ParaDyme roof module is now updated.
7. For best results, power OFF the system and restart to finalize the installation.

